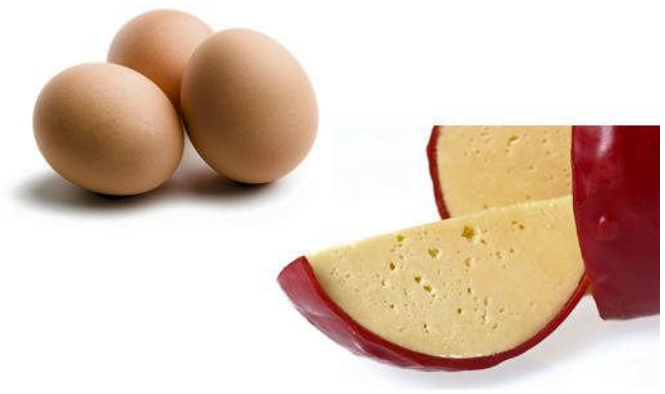
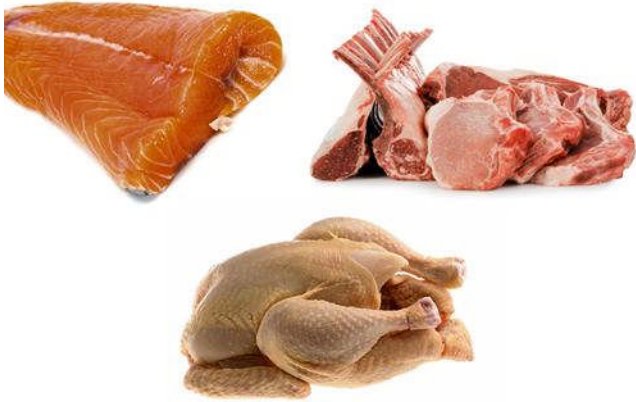


SANIVEYOR



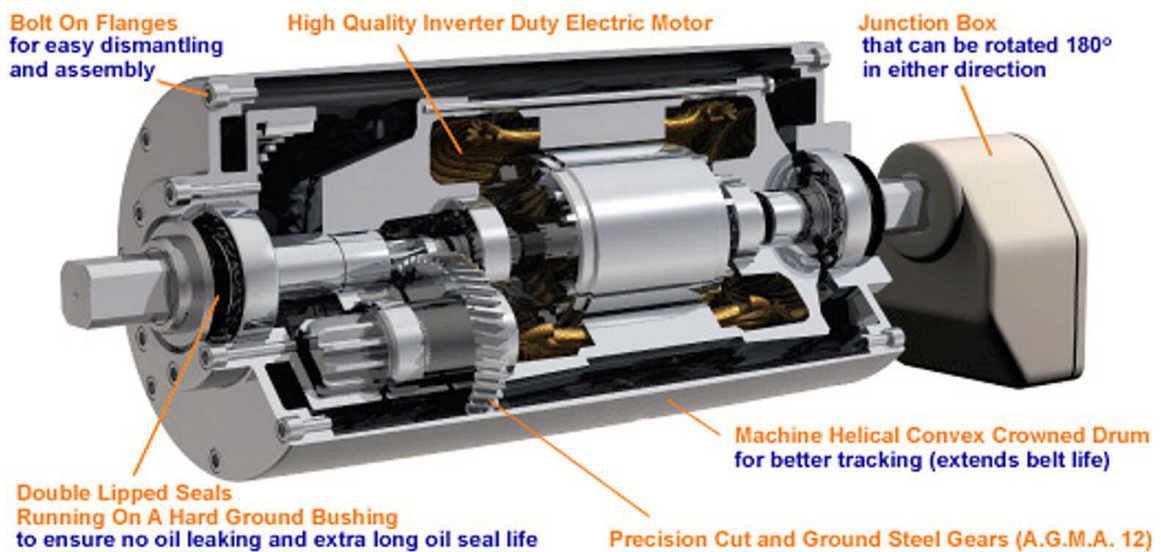
Diamond Automation's **SANIVEYOR** is a new innovation in tool-less construction. It allows for easy removal of components in seconds. No turning of knobs or special tools for fasteners is needed.

Attributes:

- No Tools Required
- Open Design for Easy Cleaning
- Standard Product
- Conveyor Disassembly in Minutes
- Quick ROI
- Lower Cost of Ownership



Diamond Automation uses a self-contained motorized drive unit. The gear drive and all moving parts are fully enclosed in an outer shell. The drive unit has no external gear reducers, sprockets, chains, chain guards and no external maintenance is required on the unit.



Benefits:

- Internal Braking allows for up to 40 start/stops per minute
- Designed for incline applications as well as horizontal
- Internal encoder available when precision control is required
- High alloy steel gears for longevity
- Energy savings up to 30% over conventional drives
- Virtually maintenance free, requiring an oil change after 50,000 hours
- Easy installation
- Hermetically sealed to withstand harmful environments

Diamond Automation's **SANIVEYOR** utilizes the ThermoDrive® hygienic belting system. The ThermoDrive® system's conveying has no pins or hinges, niches, or niches where food, allergens or bacteria can collect and hide. In addition, ThermoDrive® is driven with sprockets, eliminating the need for a tensioning (take-up) device.

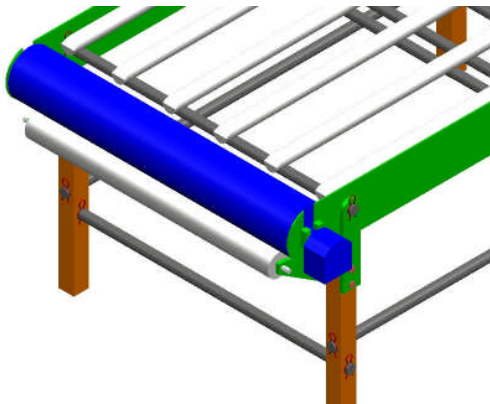


ThermoDrive® has been approved by the United States Department of Agriculture, NSF International and 3-A Sanitary



US 7,210,573
EP 1483183
Other Patents Pending

PERFECTING MOTION
THERMOTRIVE® BELTING
SPROCKET DRIVEN HYGIENIC BELTING



Round cross members adds strength and eliminate horizontal surfaces for complete drainage.

Solid wear strips can be removed quickly without tools.

Specifications:

- Flat Belt Widths: 6" to 60" (152mm to 1524mm)
- Lengths: 36" (914mm) to 40' (12.2m)
- Loads up to 160lbs. per in/belt width

Features & Benefits:

- Frame is constructed of 304 stainless steel and is designed with no horizontal surfaces for cleaning.
- NO Belt tensioning mechanism
- NO Tools needed for disassembly
- Hermetically sealed drive unit
- NO O-Rings to loose
- Off-the-shelf items
- Adjustable feet for leveling
- Integrated wash down system may be added per customer request
- ThermoDrive® Hygienic conveyor belt

Custom Engineering

Installation

Automation & Controls

Robot Integration



Build to Order

Short Run Machining

Service / Training

Project Management

Established 1979

Diamond Automation Ltd. 5096 Canal Rd. Dimondale, MI 48821
517.646.9637 www.diamsys.com email: insales@diamsys.com